



**Installation Guide**

Bugatti Exterior Door Handles – Part No. B020  
Bugatti Interior Door Handles – Part No. B021

**General notes before you use your new parts ...**

---

1. The new Bugatti door handles you have purchased are an exclusive product of Model Motorcars, Ltd., based entirely on proprietary research of prototypes and exclusive miniature manufacturing technology, and are only available through us. Please beware of imitations and copies.
2. Our Bugatti door handles are designed to be used as a substitute for the Pocher supplied parts, although some work to modify the doors to adapt the handles is required. Therefore, they are only suggested for experienced Pocher builders adept at modify the kits extensively.
3. We have developed this brief manual to walk you through construction steps in a graphic manner. We have assumed you possess ample experience in modeling practices and techniques. Therefore, we have not covered basic required steps such as sanding, filing, painting, masking, tools, etc., and rather focus on key tasks particular to our parts that are not necessarily intuitive. We recommend you to become familiar with all our parts and components prior to beginning the installation process.
4. Keep your camera handy and take lots of photographs. They will help you spot details you might miss at a glance, as well as remain as a journal of your building process.

Thanks for using our parts to enhance your beautiful models...

<b>Marvin Meit</b>	<b>Jorge Ehrenwald</b>
<b>mrmeit@modelmotorcars.com</b>	<b>jehrenwald@modelmotorcars.com</b>
<b>954-452-7629</b>	<b>52155-9199-5676</b>
10124 N.W. 4 <sup>th</sup> Street Plantation, FL 33324	Privada de Alamos 40-702 Huixquilucan, Mexico 52789
<b>www.modelmotorcars.com</b>	

# Instruction Sheet

## Bugatti Door Handles

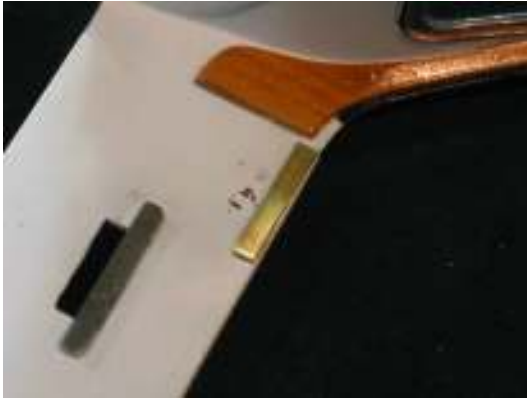


Your door handle kit includes exterior door handles (left) with 00°90 threaded rods, interior door handles (right) and interior bezels. Since each car fit is different, and many individual choices you make such as window setup, interior door paneling and upholstery will modify the door handle installation conditions, there are two key steps to ensure a proper fit.

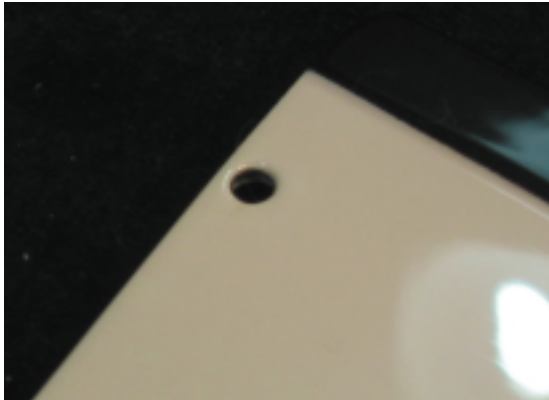


First, you must measure and cut the handle threaded rod. Make sure you allow the rod to go through your assembled door, bezel and interior leather panel and that it has enough threads to attach the interior handle as shown. Also note on both pictures that a latch must be made to close the door when the handle is turned. For the example shown, we used 1/16" by 1/32" brass stock, which was threaded with a 00-90 tap and held with a 00-90 nut. The length of the latch will vary from car to car. Also, note below that the holes on the doors might require repositioning. We recommend filling the original holes with styrene and drilling new holes where required. In the example, they were moved to allow for custom window channels (below right). Again, your individual setup will call for position choices you must decide upon.





Another important custom operation you must undertake is the fabrication and installation of the latch catch inside the car's body. Left, you see we used a piece of stock brass and glued it to the body. Size, position and thickness will have to be determined for each car individually, as it is driven by your earlier choices. On the right, you will see that, once upholstered, the latch is almost invisible and extremely functional.



Once your doors are painted, you must re-drill the holes to eliminate build-up and glue the bases to the exterior. To avoid messing up a wonderful finish, we used a toothpick to guide and hold the bases while the glue dried up. Below you will see some pictures of the finished installation. Although several steps are required to fit the handle system, the results are spectacular and 100% accurate to the prototype. We hope you enjoy this challenging but fun process !



